



## Tested PM-sensors

Dylos DC1700

Honeywell HPMA 115S0

Plantower PMS7003

Shinyei PPD60PV

Winsen ZH03B

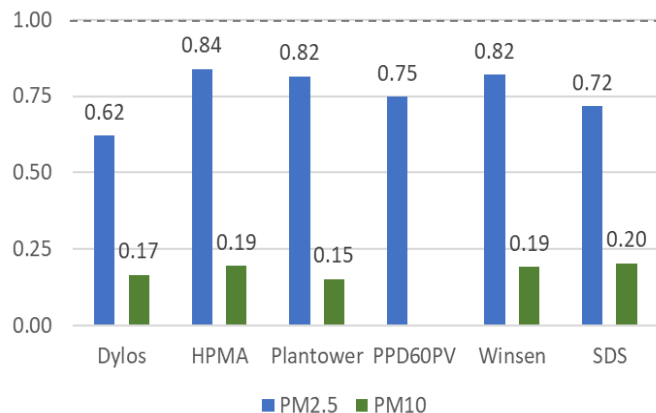
Nova Fitness SDS011

Shinyei PPD42NS\*

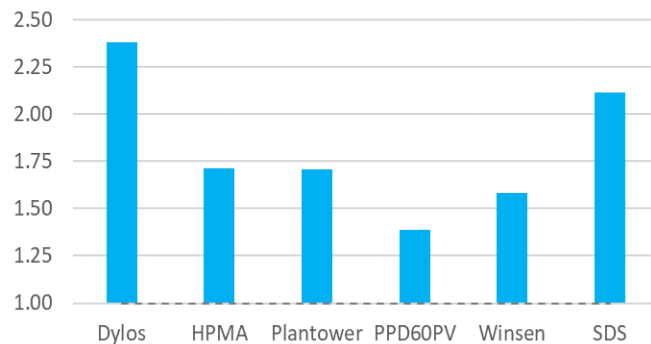
Alphasense OPC-N2\*

\*excluded from test due to technical problems

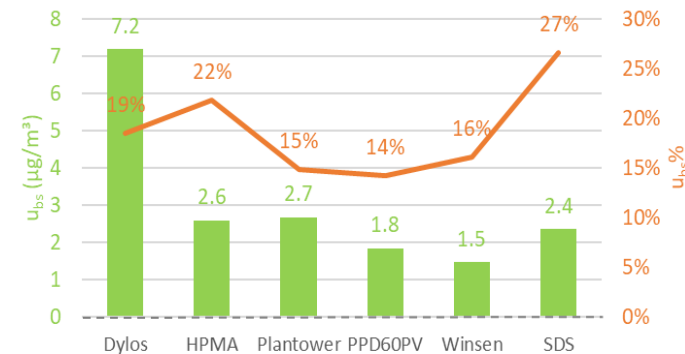
### R<sup>2</sup> of hourly sensor data vs Fidas 200



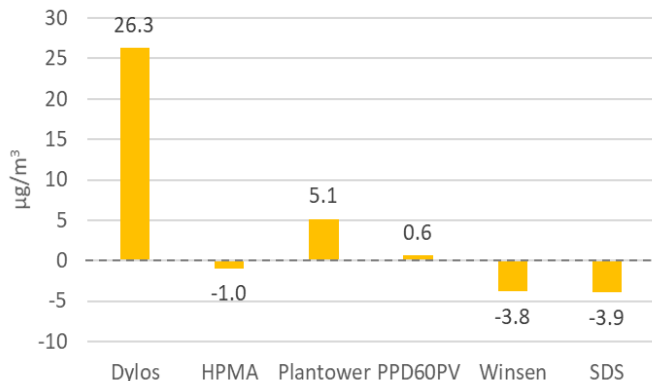
### Increase in PM<sub>2.5</sub> sensor/Fidas ratio from 50% to +90% relative humidity



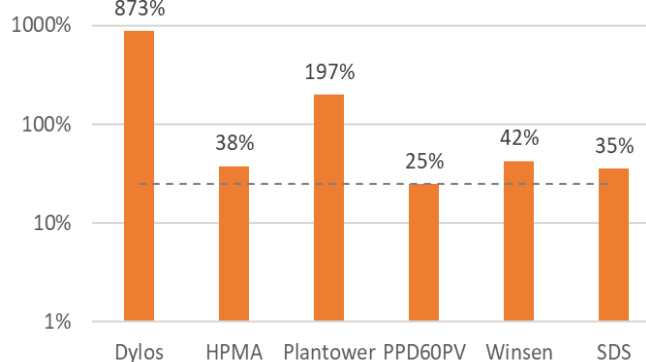
### Between-sensor uncertainty for hourly PM<sub>2.5</sub> data (u<sub>bs</sub>)



### Mean bias of hourly PM<sub>2.5</sub> sensor data vs Fidas 200



### Expanded uncertainty of 24h PM<sub>2.5</sub> sensor data vs gravimetric reference (no calibration)



### Expanded uncertainty of 24h PM<sub>2.5</sub> sensor data vs gravimetric reference (after calibration)

